

CERTIFICATE OF LOCATION OF GOVERNMENT CORNER

North Quarter Corner of Section 10, Township 105, Range 41, 5th. P.M.

STATE OF MINNESOTA, County of MURRAY

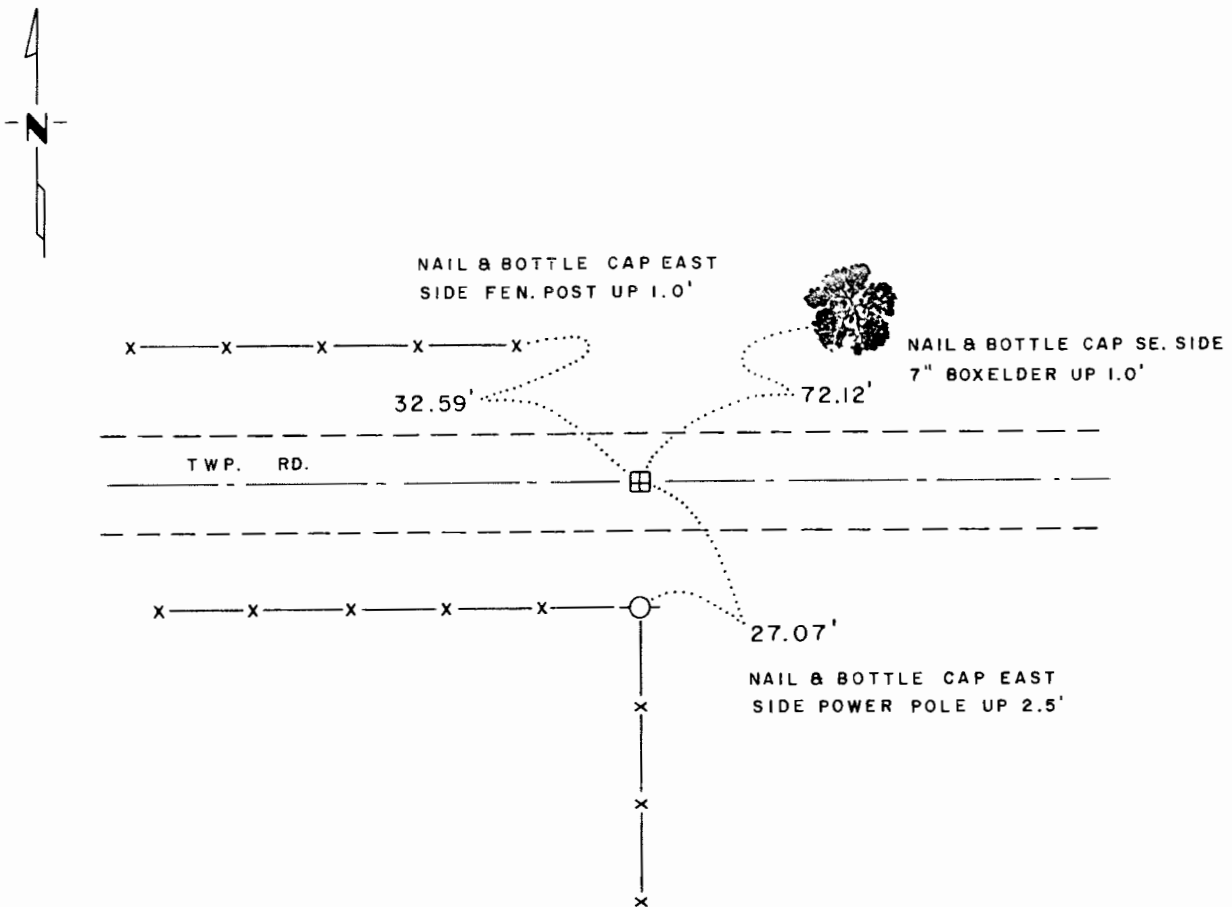
At the corner location shown on the sketch:

On 5-24-77 found a 8" x 8" x 12" Stone and 2 Pieces of Crockery Under Down 1.5'
DATE

left monument as found, lowered monument, removed monument (explain)

On 5-24-77 placed a 3/4" x 12" Iron Rod Over Stone, Down 0.2'
DATE

SKETCH OF REFERENCE TIES



Statement of evidence relative to this corner location is on back of page.

I hereby certify that this document and the data contained herein was prepared by me or under my direct supervisor.

Maury H. Stevenson 7-3-78
SIGNATURE DATE

Registration No. 12684

- Land Surveyor, Professional Engineer
 County Surveyor, County Engineer

OFFICE OF THE REGISTER OF DEEDS

County of _____

I hereby certify that this document was filed in the Reg. of Deeds office at _____ M. on the _____ day of _____ A.D., 19 _____

Register of Deeds _____

By _____, Deputy

DOCUMENT NO. _____

Statement of Evidence:

North Quarter Corner Section 10, T 105 R 41

Murray County

This corner was originally established by the U.S. General Land Office survey in 1861. The government notes show corner marked with a wood post set in mound of earth with pits and trench dug around the mound.

In May, 1977 the DNR Bureau of Engineering contacted the Murray County Offices of the Recorder, Auditor and Engineer for corner information.

Information found in the section book at the Engineer's Office was a survey by J. W. Woolstencroft of Section 10 in 1901. He shows a stone 6" x 8" x 12", at this corner, 2675' from the section corners each way.

On May 24, 1977, the DNR hired Sidney Pope to dig for this corner with his backhoe. We found a 8" x 8" x 10" stone with 2 pieces of crockery under. The stone was 18" below the road surface, in the centerline road and in line with fence south. This stone was 2675.48' from the northwest corner and 2674.87' from the northeast corner Section 10. We set a 3/4" x 12" iron rod over the stone and took ties.

SS

164267

State of Minnesota, }
County of Murray, } ss

I hereby certify that the within instrument

was filed in this office for record on the
7th day of August A.D. 19 81,

at 8:30 o'clock P.M., and was duly re-
corded as Microfilm Document No. 164267

Willard W. Ohme

County Recorder